



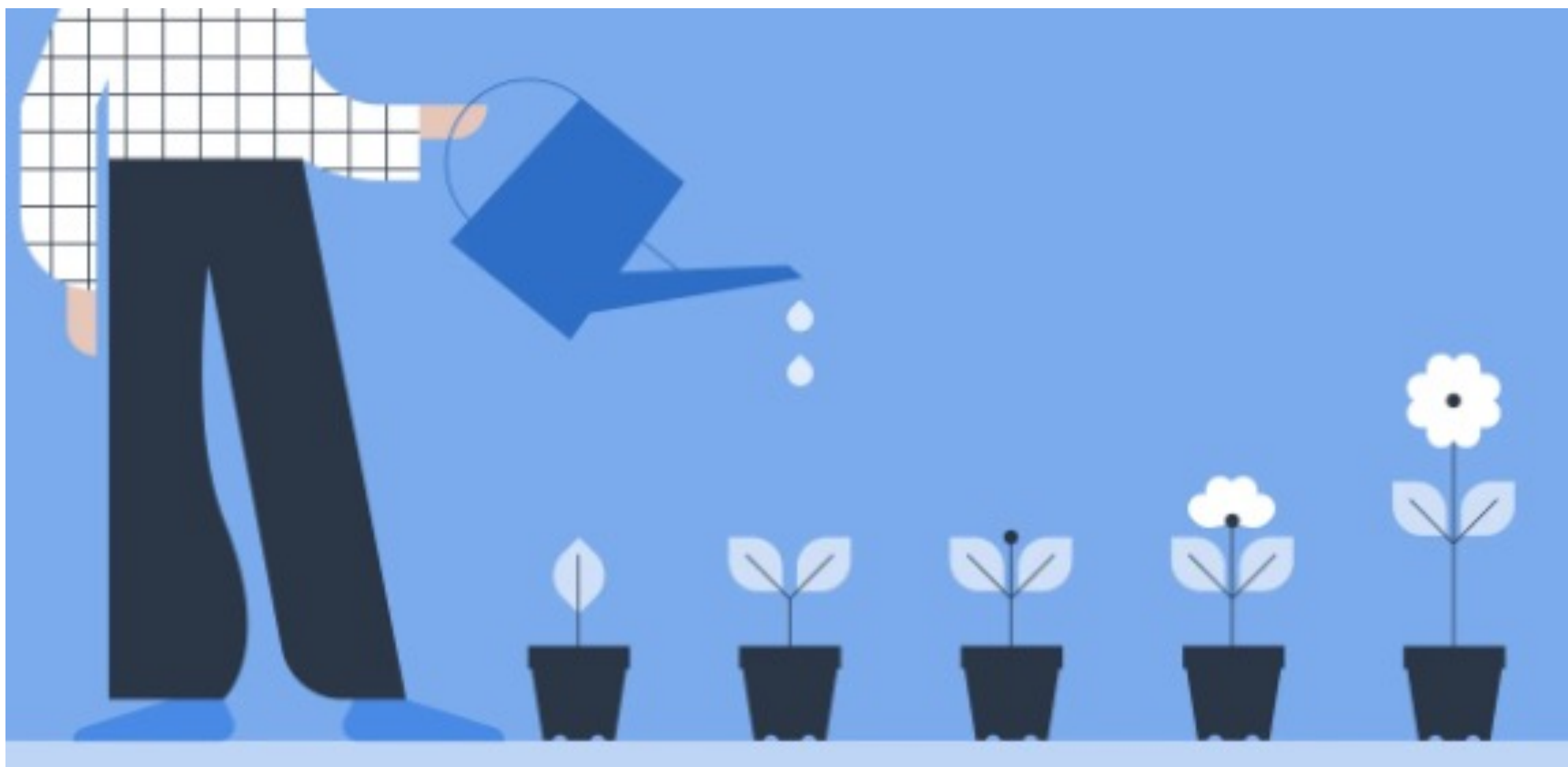
# Wizards Re-Generate

2024



# A wizard reflects on what has been..

- Wizards have achieved so much already.
- Enormous positive output!!
- The wizard community has capacity for great things.
- Energy can be harnessed and directed so it doesn't dissipate .
- We can “Activate and Stabilise” the energy.
- We are developing through stages.



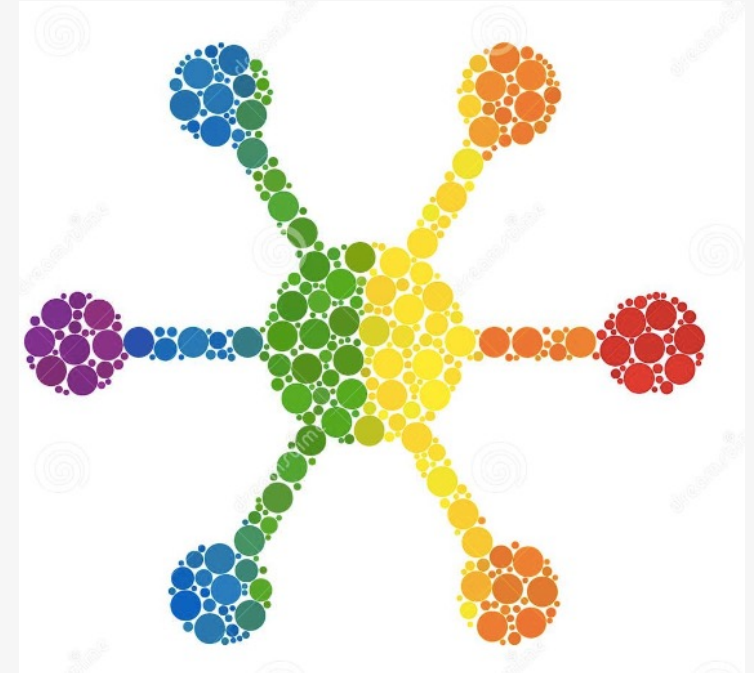
# How do we stabilise energy ?

We put it into form and structure and patterns..

Evidence of structure that has already formed.

- Quiett time, Nature walk, storytelling , Heroes journey format ,Celebrate authenticity and weirdness, Emphasis on giving.

As we develop our collective consciousness, we GENERATE more structure.



# How do we create?

- The ultimate **faith** is that I AM creating my SELF.
- To create I must differentiate myself from the ALL.
- I don't get any closer to knowing myself by repelling ideas of who I wish not to be.
- Similarly, my creations are expressions of my unique individuality – i.e **authenticity**
- When I create, I swing from BEING to DOING.



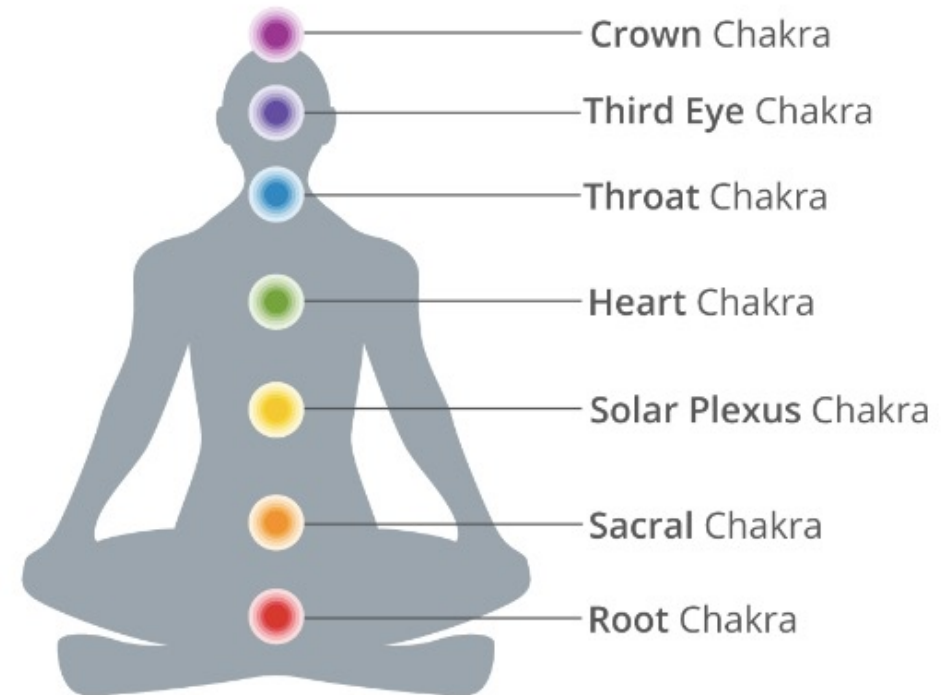
# THE HEART

We can organize from the **authentic** centre, the HEART.

We can create from the **authentic** centre, the HEART

We can connect from the **authentic** centre, the HEART

The 4<sup>th</sup> Chakra balances the 7.



# Authenticity creates cohesion

---

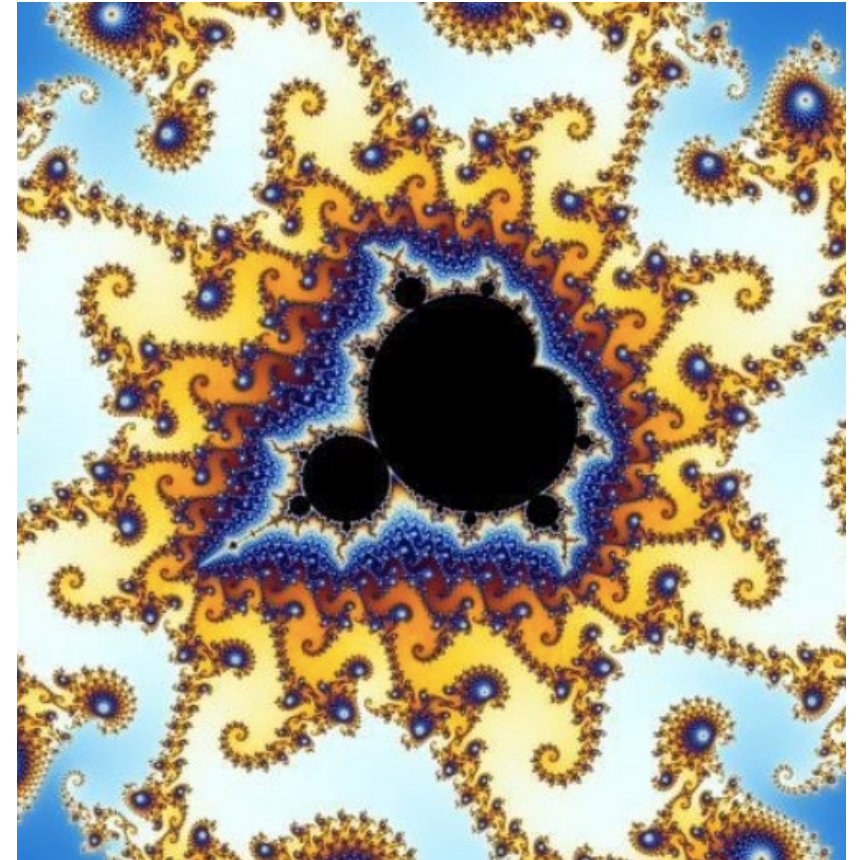
Diversity and authenticity attracts.

Conformity or sameness repels.

Like magnets, opposite ends attract.

Similarly, the cohesion within the group relies on diversity, which is authenticity.

The central node is the key point from which all patterns formulate.





# GIVE FROM THE HEART



”A wizard’s contribution is worthy if he believes it so.”

- The “BELIEF” part comes from the heart.  
i.e give from the HEART and what is given is most WORTHY.
- The central heart is the organizing structure for RE-GENERATION.
- Without organization, energy can dissipate haphazardly.
- We stabilize what greatness we have by creating (**Re-Generate**) from the heart. Put your heart into it - not just about being a “wizard” but to contributing love to the group.



# The Realization

---

I can create alternative perspectives to any undesirable experience.

---

There are an infinite number of perspectives from which I can “see” things.

---

I then can CHOOSE the desirable perspective which best serves me.

---

This is **self-manifesting** --- then **self-actualization** --- then **self-transcendence**.

---

"Individuation is to divest the self of false wrappings" – Carl Jung

# The observer is “FREE” to CHOOSE



Quantum physics- The “observer” sees the particle at any given moment, but until then it exists in a waveform of infinite possibilities.



Philosophy- The “eye” of the mind can see (“observe”) reality and choose the desired perspective using DISCERNMENT.



It is only the limits of one’s will to believe that becomes the roadblock to manifesting your reality. The imagination is not not limited.



Why would one be unwilling to believe something more desirable?



# Belief Clearing

Somebody has who has awareness over their beliefs,  
has more control over their lives.

## **Laws**

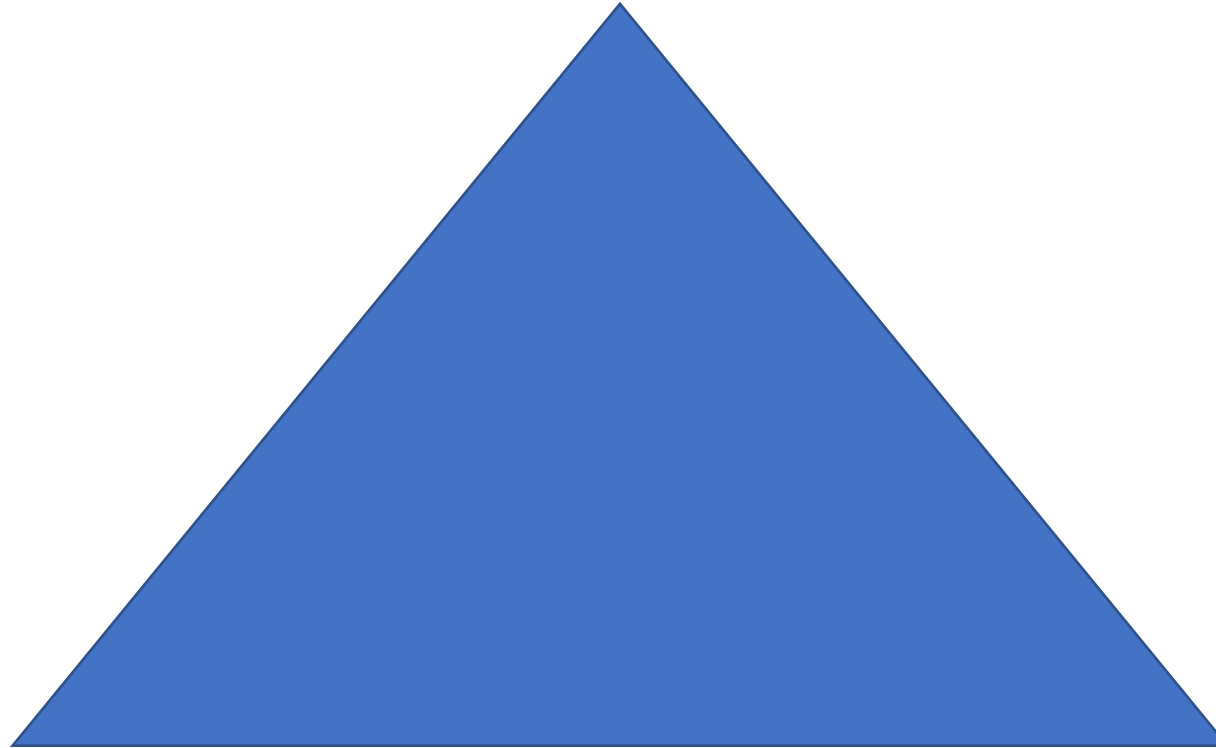
1. Beliefs are not facts - beliefs are due to faith and conviction.
2. Facts are truths - better aligned with reality.
3. Beliefs can become more powerful than facts on a personal level.
4. Beliefs can hold long-term influence on my life.

Remain curious

# 3 PLANES OF REALITY

WILL / CHOICE / CREATION / MIND / CONSCIOUSNESS

OBSERVATION (quantum physics)



MATERIAL / MATTER

PHYISCAL / DARK

PARTICLE (quantum physics)

SPIRITUAL / ENERGY

/LIGHT WAVEFORM

(quantum physics)

# The power of the mind

The connection between material and spiritual man is the intellectual man. For the mind partakes in both material and immaterial qualities.

Through developing intellect man can empower himself.

The great search for light, life and love starts on the material plane, and carried to its ultimate, its final stage is complete oneness with universal consciousness. "Thoth"



# MATTER and LIGHT

**Matter examples** - The PHYSICAL body, EARTH, ROCKS, POSSESSIONS

MATERIAL(ISM) tends to have a large emphasis in present times, creating imbalance in the way people live. People who can only see MATTER are generally feeling the imbalance of a lack of SPIRITUALITY,

**Light examples** SPIRITUALISM, SOUL and ENERGY (LIGHT)

Spirituality can be a tempting escape from the material world (think drop-out hippy movement of the 1960's, addiction/drug use, feeling that money is "bad"), however, reality is that we are spiritual entities in physical bodies, and matter is part of our world.

IMBALANCE is the only "bad". We may find ourselves  
BLINDED in the darkness of matter, or in the brightness of  
extreme light.



# Existential questions

Questions of my existence :

WHO AM I? - understanding SELF

WHY AM I? - understanding PURPOSE

WHEN AM I? – understanding DEATH

Wisdom is revealed by going “IN AND THROUGH”. It is a mantra to approaching these hard questions. Resisting these imminent questions causes them to persist and manifest in unrecognizable and undesirable ways.

The unconscious is compelled to become conscious.







# IS THE UNKNOWN KNOWABLE ? .....WIZARDS indulge in MYSTERY

Is there a subtle suffering that sits behind the sense of “not knowing”?

The KNOWN is comforting,

The UNKNOWN can be uncomfortable.

What is the TRUTH ?

Is it UNKNOWNABLE?

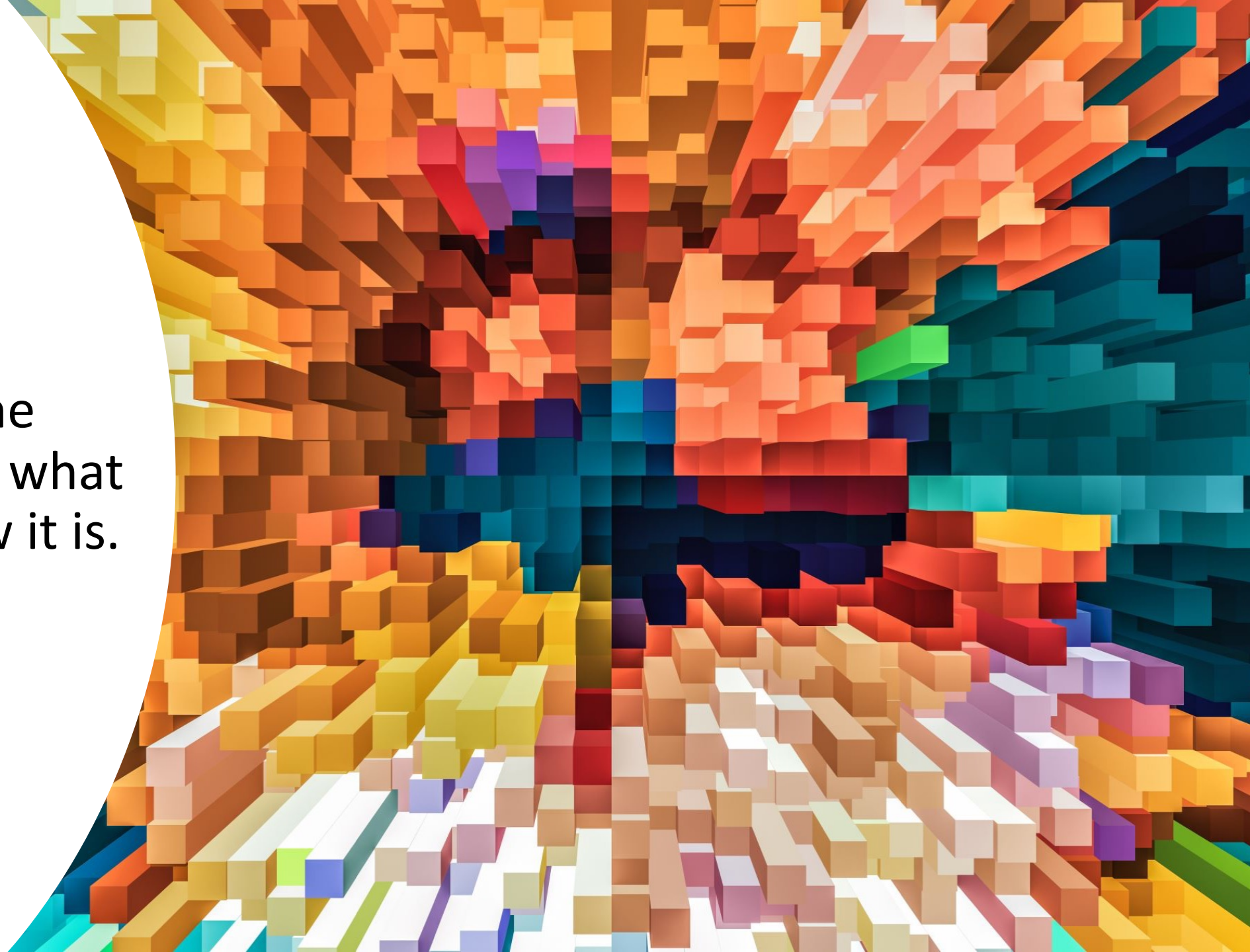
Have we felt a sense of the DIVINE through our experiences of AWE? Can we have a FAITH that something unknowable is known to be true?

# Ancient ideas correct

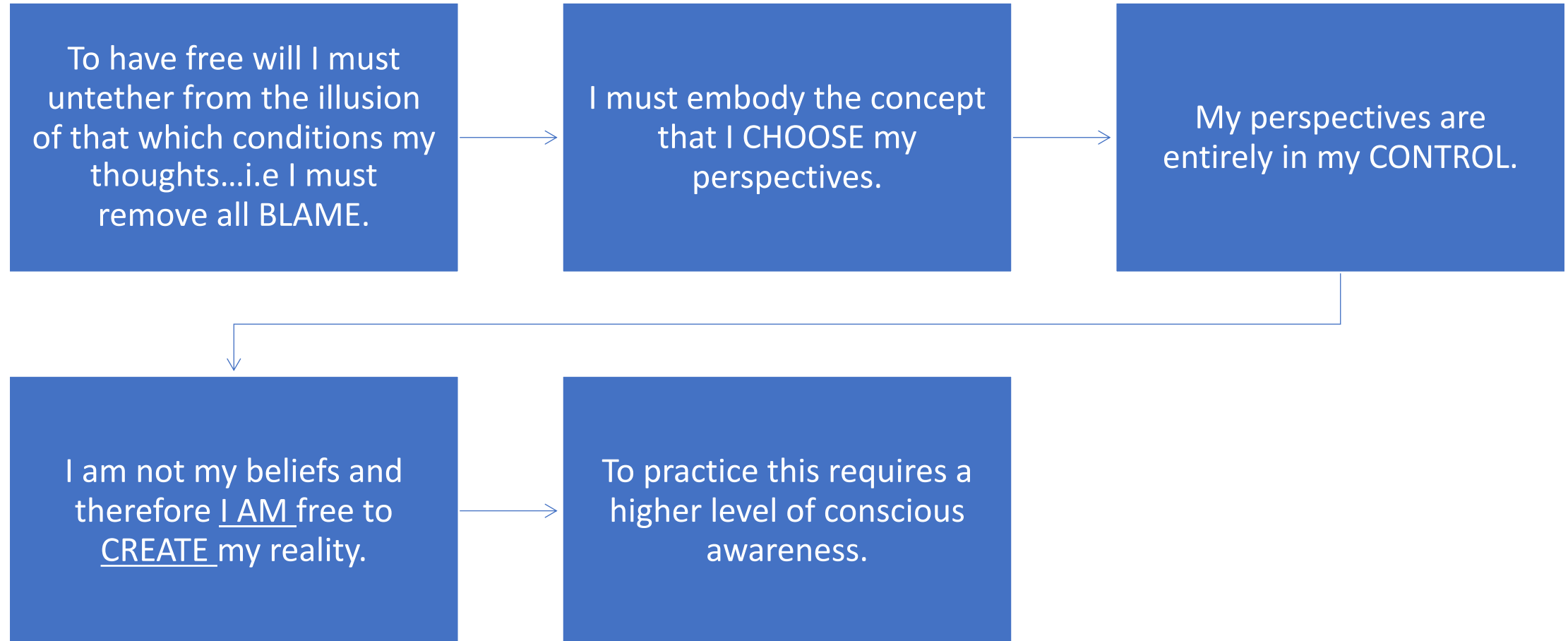
- “Space-time” science cannot explain reality.
- Consciousness is not reducible.
- Science is now proving ancient ideas to be true:
  - The “illusion” is true (local realism is false)
  - Everything is made of energy
  - Nature is the most intelligent source



The ego is the  
renderer and  
defender of the  
“illusion” that what  
you see is how it is.



# FREEDOM of CHOICE



# A wizard plays a role...

**Can we continue to awaken the Buddhic level with universal love and awareness of the heart?**

**Easier said than done. Great work to be done on SELF.**

**When as a planet the cognitive awareness is clear, the darkness is gone. A Golden Age will arrive.**



# Connecting with the higher self

By connecting with nature and embodying the idea that my most natural self is the highest vibrating version of myself, I can fast forward to the realization that I am perfectly created, imperfections and all.

I can honour the beauty of my own authenticity by celebrating the beauty inherent within nature.





---

A WIZARD WILL  
WANDER AND  
THROUGH HIS  
WANDERINGS GAIN  
WISDOM